

PRINCE GEORGE'S COUNTY
CHECKS ALL THE DATA
CENTER BOXES FOR YOUR
SITE SELECTION NEEDS

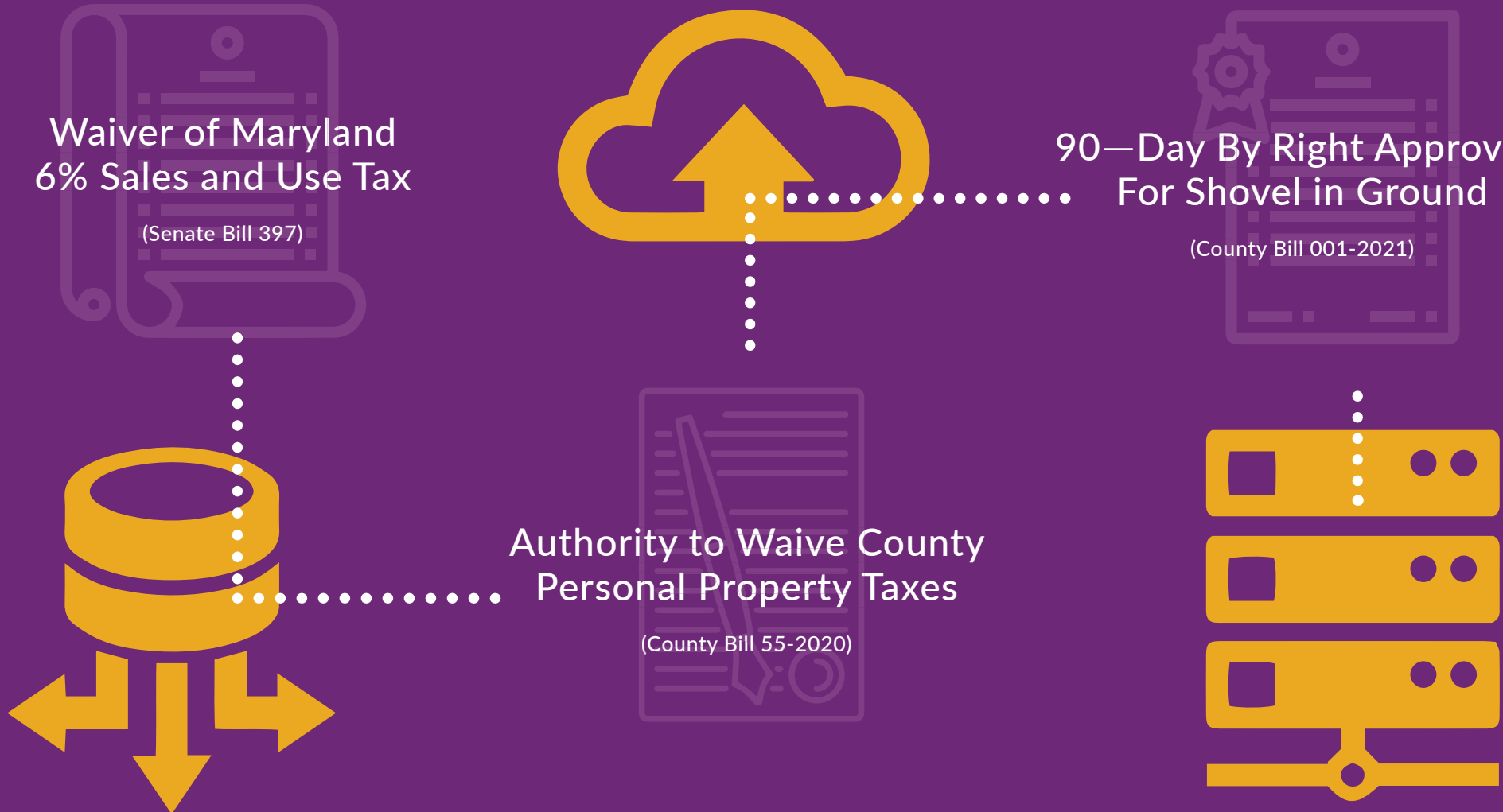
Prince George's County Economic
Development Corporation

PRINCE GEORGE'S COUNTY, MARYLAND DATA CENTER READY

Waiver of Maryland
6% Sales and Use Tax
(Senate Bill 397)

90—Day By Right Approvals
For Shovel in Ground
(County Bill 001-2021)

Authority to Waive County
Personal Property Taxes
(County Bill 55-2020)



WHY PRINCE GEORGE'S COUNTY, MARYLAND?
HERE ARE FIVE REASONS...



REASON 1



LOWER OPERATING COSTS

- Commercial real estate is 42% lower in cost than National Average
- Up to 70% lower energy rates*

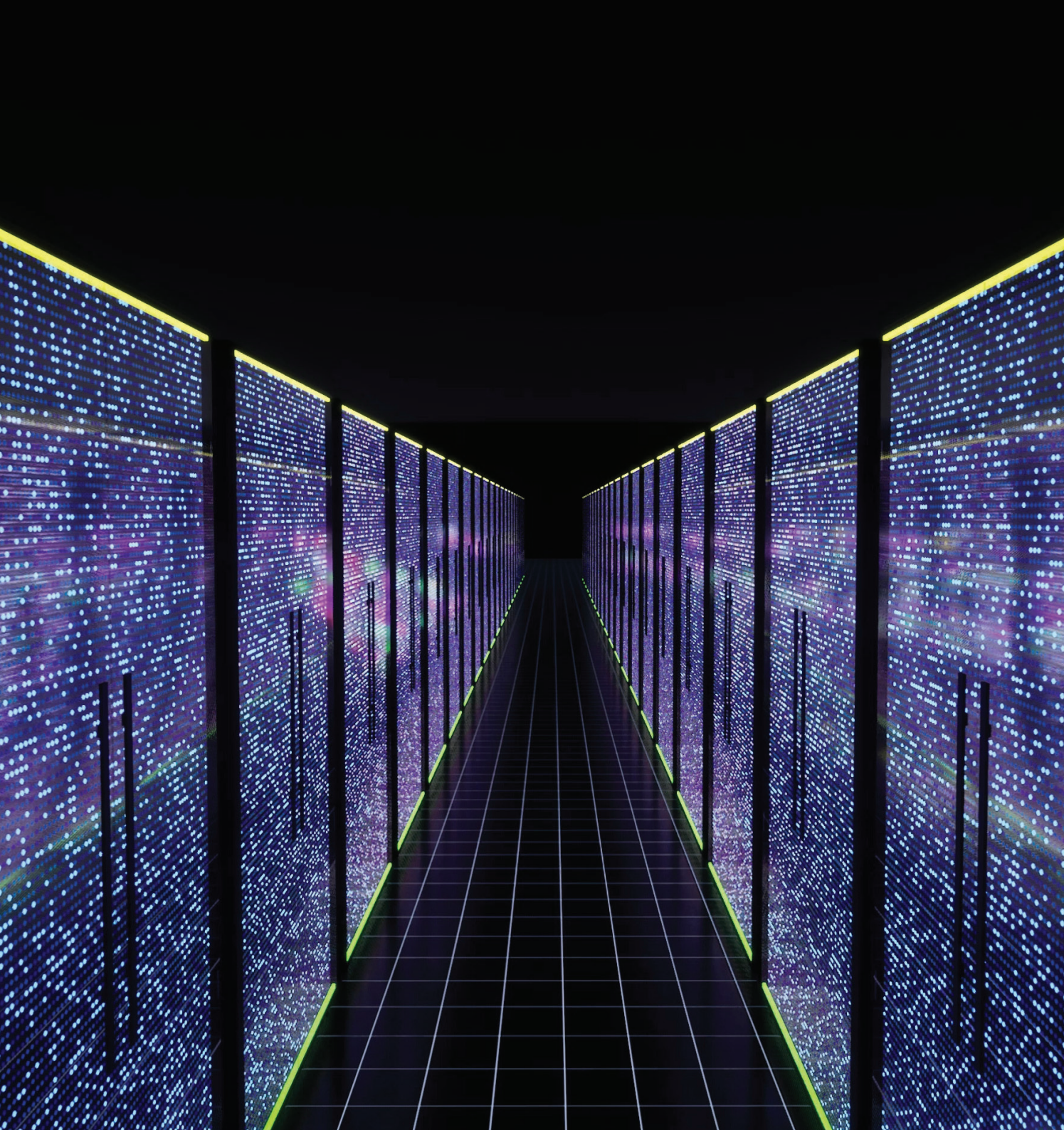
* <https://www.electricitylocal.com/states/maryland>

REASON 2



STABLE POWER SOURCES

- Redundant power capability
- Sites located in least vulnerable region for natural disasters or environmental risks



REASON 3



PROXIMITY TO END USERS AND LABOR FORCE

- Access to government and private users
- 15 Federal agencies located in the County
- Strong pipeline for Data Center Workforce (i.e. University of Maryland College Park)
- Led Maryland in job growth for 6 consecutive years

REASON 4



GOVERNMENTAL ASSISTANCE

- Waiver of Maryland 6% Sales and Use Tax
- Authority to waive County Personal Property Taxes
- 90—Day By Right Approvals Until Shovel in Ground

REASON 5



CONNECTIVITY

- Sites within a 2-mile radius of multiple fiber options
- Existing and scalable power capacity sites
- Access to green and alternative supply of electric power
- Carbon neutral operating platforms

TOP 5 BOXES CHECKED

COST

- Commercial real estate is 42% lower in cost than National Average
- Up to 70% lower energy rates*

STABLE POWER SOURCES

- Redundant power capability
- Sites located in least vulnerable region for natural disasters or environmental risks

PROXIMITY TO END USERS AND LABOR FORCE

- Access to government and private users
- 15 Federal agencies located in the County
- Strong pipeline for Data Center Workforce (i.e. University of Maryland College Park)
- Led Maryland in job growth for 6 consecutive years

GOVERNMENTAL ASSISTANCE

- Waiver of Maryland 6% Sales and Use Tax
- Authority to waive County Personal Property Taxes
- 90–Day By Right Approvals Until Shovel in Ground

CONNECTIVITY

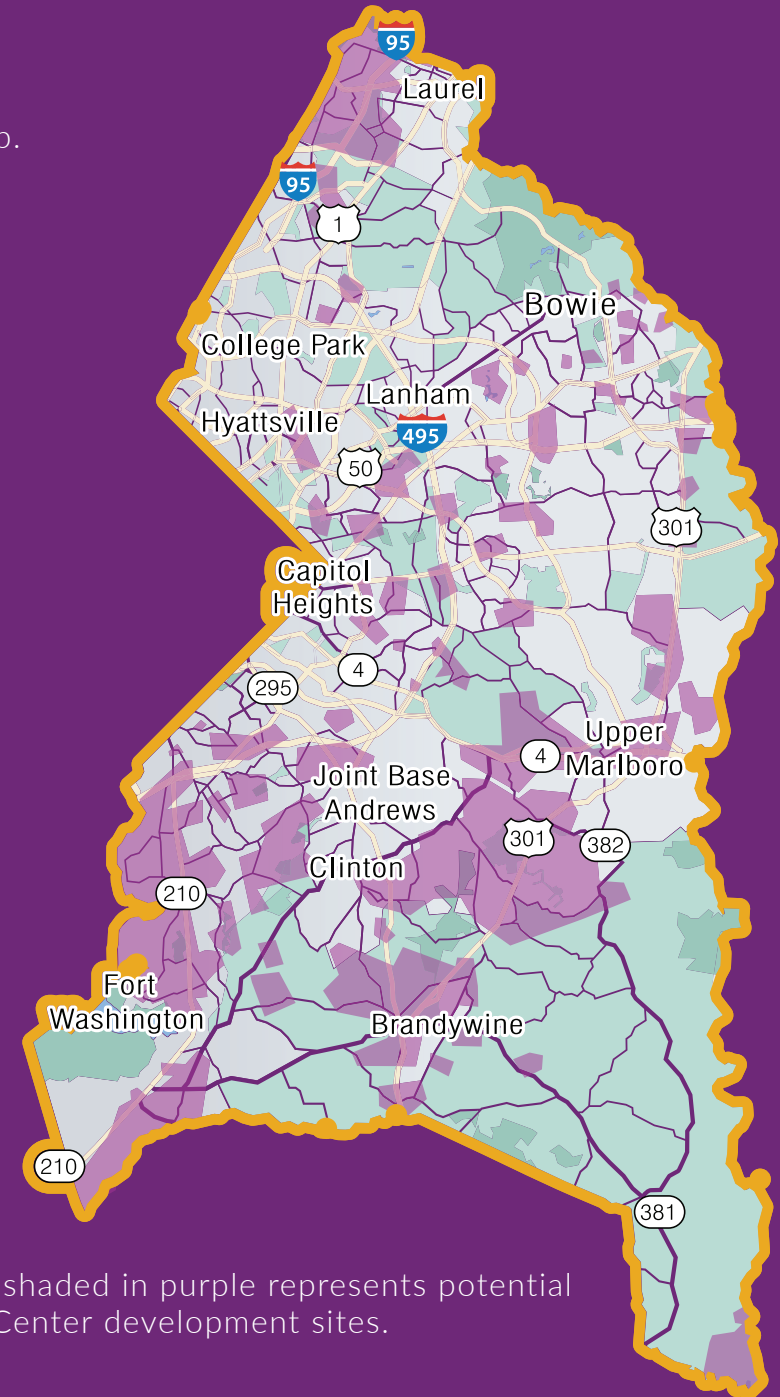
- Sites within a 2-mile radius of multiple fiber options
- Existing and scalable power capacity Sites
- Access to green and alternative supply of electric power
- Carbon neutral operating platforms

GIS DATA CENTER ASSETS MAP

Click on the map to be directed to our GIS Data Center Assets Map.

DATA CENTER ASSETS

- Major Roadway
- Existing Data Centers
- Potential Data Center Sites
- Electrical Substation
- Major POWER Transmission Lines (2017)
- FEMA Floodplain (2016)
- Site Selection by the acreage (20 / 30 / 50)
- Zoning
- Water and Sewer Coverage
- Cable (ICBN Fiber Routes)
- ICBN Buffer
- MD Broadband Service Area



Areas shaded in purple represents potential Data Center development sites.

AN EXAMPLE OF PRINCE GEORGE'S COUNTY'S INCREDIBLE ELECTRICITY RATES

Laurel, MD (Home of **AiNET's** 42,000 square foot data center)

The average (industrial) electricity rate in Laurel is **69.12% less** than the national average rate of 6.67¢/kWh. Industrial rates in the U.S. range from **4.13¢/kWh to 30.82¢/kWh**.

The average industrial electricity rate in Laurel is **2.06¢/kWh**.

This average (industrial) electricity rate in Laurel is **74.54% less** than the Maryland average rate of **8.09¢/kWh**.

Industrial Electricity Consumption in Maryland

Industrial electricity consumption in Maryland averages 41,940 kWh/month, which ranks 46th in the nation and is 62.61% less than the national average of 112,158 kWh/month.

Industrial electricity bills in MD

The average monthly industrial electricity bill in **Maryland is \$3,393**, which ranks 45th in the nation and is **54.66% less** than the national average of \$7,483.*



* <https://www.electricitylocal.com/states/maryland>

CONTACT US

For more information about locating your data center in Prince George's County please contact the Prince George's County Economic Development Corporation or visit PGCEDC.com/datacenter.

or contact

Mayank Kapur
Director of Business Development
IT, Cyber Security, Data Center
301-583-4632 | Mkapur@co.pg.md.us